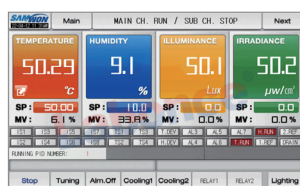


## Stability Chamber(CGS series: with visible light+UVA)

Labonce-CGS Medicine Stability Testing Chamber, Choose the original imported high quality parts, Stable and reliable performance, Suitable for GMP and CGMP certified users.

- ◆ Reference Standard: ICH2003、Chinese Pharmacopoeia 2020 edition;
- ◆ Insulation material: Overall high-density polyurethane foam technology, with good insulation and moisture retention performance;
- ◆ Chamber Materials: The exterior is coated with high quality steel plate, The liner is made of mirror stainless steel 304, no pollution source, easy to clean;
- ◆ Control system: Programmable color touch screen controller;
- ◆ Refrigeration system: Imported fully enclosed compressor;
- ◆ Humidity control: Original imported capacitive humidity sensor, high precision, low drift, long service life, maintenance free;
- ◆ Data management: configuring needle micro printers and electronic data storage functions;
- ◆ Safety device: Compressor overheat and overpressure overload protection, water shortage protection, dry burning protection system, independent overtemperature protection alarm system;
- ◆ Alarm system: On-site beeping alarm;
- ◆ Double Door structure: Interior door tempered glass door, Open the outer door to observe the samples, The temperature and humidity inside the container will not change in a short time, The outer door is solid can keep temperature and humidity, It can also prevent the influence of external light;
- ◆ Controlling Temperature Precision: Temperature Fluctuation <  $\pm 0.5^{\circ}\text{C}$ ; Temperature Deviation <  $\pm 1.0^{\circ}\text{C}$ ; (Without light) ;
- ◆ Controlling Humidity Precision: Humidity Fluctuation <  $\pm 2\%\text{RH}$ ; Humidity Deviation <  $\pm 3\%\text{RH}$  (Without light) ;
- ◆ Lighting system: The visible light range is 100~8000LUX, and the total illumination for the lighting test is not less than  $1.2 \times 10^6 \text{LUX} \cdot \text{hr}$ ;
- ◆ UV system: The UVA range is 0.84~5w/  $\text{m}^2$ , and the UVA energy is not less than  $200 \text{w} \cdot \text{hr/ m}^2$  ;
- ◆ Power: AC220V $\pm 10\%$  50HZ;
- ◆ Environment Temperature: +5 ~ 35 $^{\circ}\text{C}$  ;
- ◆ Optional: Temperature-humidity deviation, sudden power failure , control by Remote SMS alarm.



◆ Control system



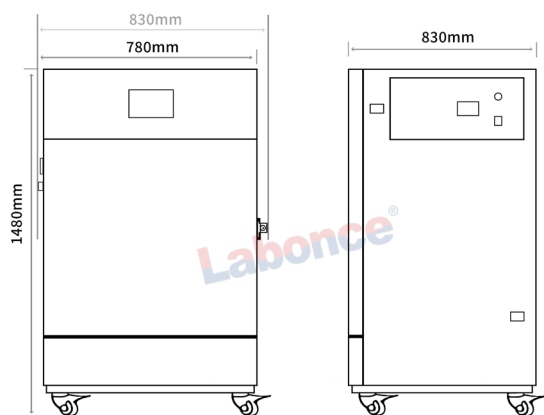
◆ Print device



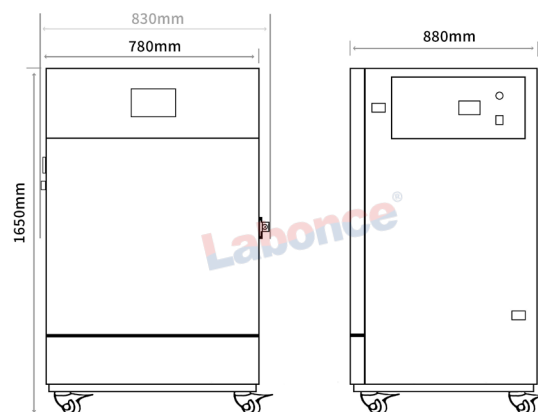
◆ 150CGS~500CGS

Model	Temperature Range ( $^{\circ}\text{C}$ )	Humidity Range (RH)	Capacity (L)	Interior Dimensions(mm) W×D×H	External Dimensions(mm) W×D×H	Power (kW)	Shelf (Standard)
Labonce-150CGS	15 ~ 65	20 ~ 95%	150	600×405×620	780×830×1480	1.2	3
Labonce-250CGS	15 ~ 65	20 ~ 95%	250	600×500×830	780×880×1650	1.5	3
Labonce-400CGS	15 ~ 65	20 ~ 95%	400	600×700×950	780×1060×1750	2.0	3
Labonce-500CGS	15 ~ 65	20 ~ 95%	500	680×680×1080	860×1050×1850	2.2	4
Remark	Equipped with four functions: temperature, humidity, visible light, and near ultraviolet. Illumination measurement is equipped with visible and UVA sensors as standard, achieving automatic control of illumination. Both visible and UVA values are automatically printed and stored.						

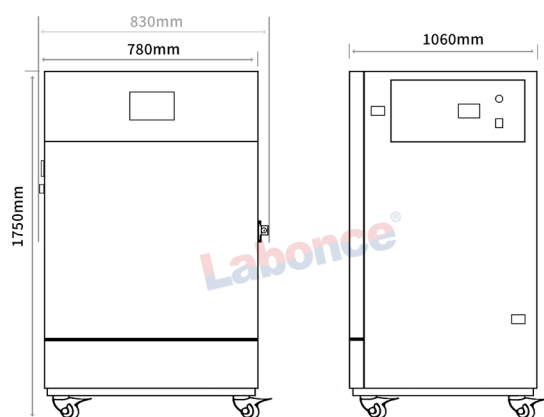
All indicators on this color page were measured at an ambient temperature of 20~25 $^{\circ}\text{C}$ .



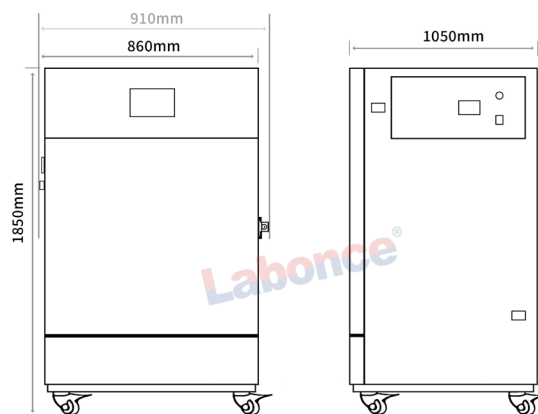
◆ 150CGS



◆ 250CGS



◆ 400CGS



◆ 500CGS

